

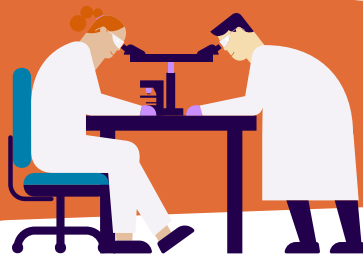
# What initiatives does Sanofi sponsor to help support Canadian patients and clinicians along the rare disease journey?

## Roadmap *2 Rare*



### Screening

Sanofi Canada supports several high-risk screening projects and digital/AI initiatives in Canada that support clinicians in identifying patients who may be at increased risk of having a rare disease.



### Diagnosis

In collaboration with Revvity Omics, Sanofi Canada has launched the **Roadmap2Rare Diagnostic Program**, a sponsored testing program that covers enzymatic activity, biomarker, and genetic testing for several rare diseases. Metabolic genotyping for Gaucher disease type 1 (when applicable to certain treatment considerations) is available as well.

### Treatment and Monitoring

After a rare disease diagnosis, clinicians may wish to monitor disease progression and treatment response. Sanofi provides access to biomarker monitoring for several rare diseases through a sponsored, international **Rare Disease Specialty Testing Program**.

This program also covers immunogenicity testing of patients on Sanofi treatment, including the complimentary analysis of anti-drug antibody levels and adverse event-related testing.



### Family History

Sanofi sponsors **Family Tree Testing** after the identification of a proband patient. For Fabry disease, the **Fabry Find Tool** can help clinicians build family trees.



### Patient Support

To support rare disease patients on treatment with Sanofi products and their treating clinicians, Sanofi Canada offers the **Rare Together Patient Support Program**.

This program is tailored to each patient, helps address barriers to access, and supports the administration of drugs for complex medical conditions.